

PLAN OF PROPOSED SUBDIVISION
 SHOWING LOTS 16-22, BLOCK 62
 LOTS 7-12, BLOCK 69, KELLY DRIVE,
 EIGHTH AVENUE AND LANES
 IN THE N.W. 1/4 OF SECTION 17
 TOWNSHIP 8, RANGE 18, W. 3RD MER.
 SASKATCHEWAN
 BY: R.J. HILLIER S.L.S.
 SCALE 1:2000
 2008

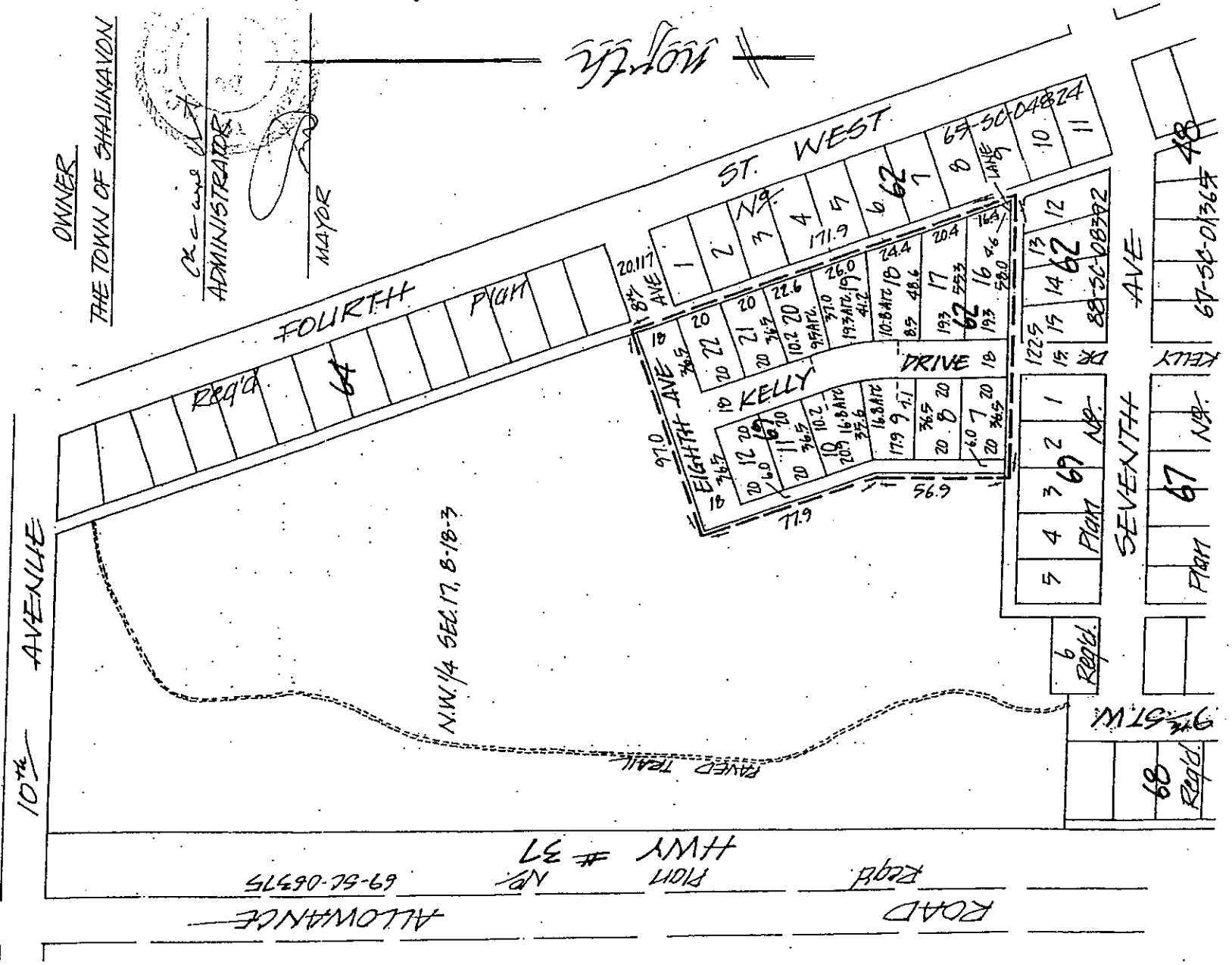
THE SUBDIVISION SHOWN WITHIN THE BOLD
 DASHED LINE IS HEREBY APPROVED AS
 PER THE ATTACHED NOTICE OF DECISION
 DIRECTOR OF COMMUNITY PLANNING
 VALID FROM [Signature] FOR 24 MONTHS

MEASURES ARE ± 0.1 metres.

MEASUREMENTS ARE IN METRES AND DELIMITALS THEREOF
 AREA TO BE SUBDIVIDED IS OUTLINED IN A BOLD DASHED
 LINE AND CONTAINS 156 ha ± (7.86 AC ±)

DATED AT THE TOWN OF EASTEND IN
 THE PROVINCE OF SASKATCHEWAN
 THIS 1ST DAY OF MAY AD 2008

[Signature]
 SASK LAND SURVEYOR



OWNER
 THE TOWN OF SASKATCHEWAN
 ADMINISTRATIVE
 MAYOR

ROAD ALLOWANCE
 PLAN # 37
 NP. 69-5C-05375

North

CONCEPTUAL PLAN NO 2

SHOWING SUBDIVISION

of a portion of the N.W. 1/4 of SECTION 17
IN TOWNSHIP 8, RANGE 18, W. 3RD MER.

SHALINAVON

SASKATCHEWAN

BY: R.J. HILLIER SLS

APRIL 2008

SCALE 1:2000

METRIC

